

Dome light net

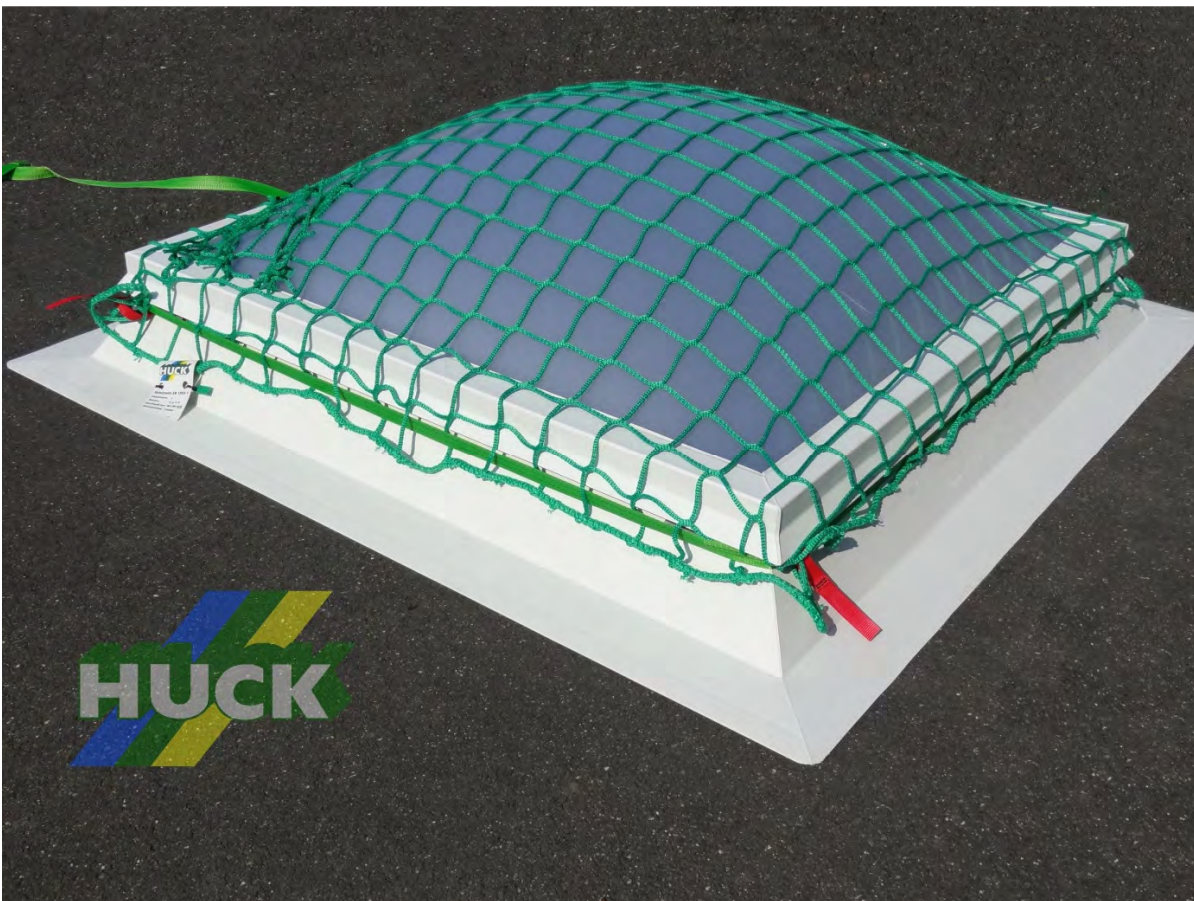
Installation and operating instructions

Protection system for dome lights

Art. No. 1741 -100-01

Art. No. 17410 -100-01 (2 x 2 m)

Art. No. 17411 -100-01 (3 x 3 m)



Please pay attention to the explanations and to the abbreviations and symbols.
If you have any queries, please contact the manufacturer.

Table of contents

1	Foreword – Dome light protection system, dome light net	3
2	Safety instructions.....	4
3	Components, dimensions, material, application	6
4	Storage and care	6
5	Subfloor	6
6	Standards.....	6
7	Symbols and markings.....	7
8	Inspection / lifespan	8
9	Period of use	9
10	Instructions for use	9
11	Installation	10
12	Inspection sheet-- Dome light net	12

1 Foreword – Dome light protection system, dome light net

 Achtung	<p>Die Montage und die Verwendung der Sicherheitseinrichtung ist erst zulässig, nachdem der Monteur und der Anwender die Original Montage- und Bedienungsanleitung in der jeweiligen Landessprache gelesen hat.</p>	DE
 ATTENTION	<p>The safety device may not be installed or used until the fitter and the user have read the original installation and operating instructions in their respective language.</p>	EN
 ATTENTION	<p>Montage et utilisation du dispositif de sécurité autorisés seulement après que le monteur et l'utilisateur ont lu les instructions originales de mise en place et d'utilisation dans leur langue nationale respective.</p>	FR
 ATTENZIONE	<p>Il montaggio e l'utilizzo del dispositivo di sicurezza è consentito soltanto dopo che l'installatore e l'utilizzatore hanno letto le istruzioni di montaggio e d'uso originali nella lingua del proprio paese.</p>	IT
 ATTENTIE	<p>De montage en het gebruik van de veiligheidsinrichting is pas toegestaan, nadat de monteur en de gebruiker de originele montage- en gebruikershandleiding in de betreffende taal gelezen hebben.</p>	NL
 OBS	<p>Säkerhetsanordningen får inte monteras och användas förrän montören och användaren har läst igenom monterings- och användningsinstruktionerna i original på respektive lands språk.</p>	SE
 GIV AGT	<p>Montagen og anvendelsen af sikkerhedsudstyret er først tilladt efter at montøren og brugeren har læst den originale i opbygning og anvendelse i det pågældende lands sprog.</p>	DK
 ATENCIÓN	<p>El montaje y el uso del dispositivo de seguridad solo está permitido después de que el montador y el usuario hayan leído las instrucciones originales de montaje y de uso en el idioma del respectivo país.</p>	ES
 ATENÇÃO	<p>A montagem e o uso do dispositivo de fixação apenas é permitido depois de o técnico de montagem e o utilizador terem lido as Instruções de montagem genuínas nas suas respectivas língua nacionais.</p>	PT
 UWAGA	<p>Montaż i użytkowanie urządzenia zabezpieczającego dozwolone jest dopiero wtedy, gdy monter i użytkownik przeczytają oryginalną instrukcję montażu i użytkowania w swoim języku.</p>	PL
 POZOR	<p>Montáž a použití zajišťovacího zařízení jsou povoleny teprve tehdy, když si montér a uživatel přečetli originální návod k instalaci a použití v jazyce dané země.</p>	CZ
 FIGYELEM	<p>A biztonsági berendezés felszerelése és használata csak az után megengedett, hogy a szerelő és az üzemeltető olvasta a saját nyelvére lefordított, eredeti felszerelési és használati utasítást.</p>	HU
 DIKKAT	<p>Güvenlik tertibatının montajı ve kullanımı ancak, montaj teknisyeni ve kullanıcı, orijinal Yapım ve Kullanım Talimatını ilgili ülke dilinde okuduktan sonra izinlidir.</p>	TR

2 Safety instructions



Before using the equipment, attention must be paid to the following safety instructions and the best available technology.

- These operating instructions must be read in full. The use and limitations of the protection system, as well as the risks associated with using it, are to be understood and accepted.
- Before using the fall protection system, measures must be drawn up (emergency plan) for rapid rescue. Important!: being suspended in personal protective equipment for a long time after a fall can lead to severe injury or even death (suspension trauma).
- The dome light net may only be installed using the best available technology by suitable (knowledgeable and competent) people who are familiar with the safety system.
- The system may only be installed or used by people who are familiar with these operating instructions and with the safety regulations in force in the respective location, as well as who are physically and mentally fit and trained in PPE (personal protective equipment).
- Health restrictions (which include taking medicine, heart and circulation problems and alcohol) impair the user's safety.
- When using the system, the respective accident prevention regulations (e.g. working in areas where there is a fall hazard) are to be observed.
- These operating instructions are to be kept with the product.
- The inspection sheet and the inspection record are to be completed carefully.
- For horizontal use, only fasteners suitable for this intended use and for the fall edge may be used (sharp edges include concrete, girders and trapezoidal sheet metal). Important: in the event of a fall, swinging should be avoided.
- Particular attention should be paid to ensuring that sharp edges do not damage the fall arrest equipment.
- The protection system is designed to protect people and may not be used for any other purpose. It may only be used in the ways described in these instructions.
- The protection system is only suitable and approved for the protection of 1 person.
- Never place or hang unspecified loads in the protection system.
- The components which have been individually checked and approved may only be combined in accordance with the information contained in these operating instructions. Incorrect use can impair its safe operation which can lead to serious or fatal injuries.
- Before work starts, it must be ensured that no objects can fall from where the work is being carried out. The area underneath where work is being carried out is to be kept clear.
- Anyone working in areas where there is a fall hazard must ensure that the connection to the fall arrest equipment is kept as short as possible to avoid the possibility of a fall.
- Users must ensure that the subfloor is suitable for attaching the fall arrest equipment. (Dome light with or without flashing, see page 9)
- If anything is unclear during installation, the manufacturer must be contacted.
- No changes may be made to the approved fall arrest equipment. If changes are required, the manufacturer must be contacted and written approval requested.

-
- The system may no longer be used if there is any apparent damage to the material, lashing strap, ratchets etc. This also applies when defects are identified during regular inspections.
 - When being used as fall arrest equipment (webbing strap), it must be used in such a way that it is not possible to fall over the edge when the personal protective equipment is being used correctly.
 - When in use as fall arrest equipment (webbing strap), the minimum space required underneath the building edge is:
the manufacturer's information concerning the personal protective equipment used including strap displacement plus the person's height plus 1m clearance.
 - Before use, the entire protection system is to be visually checked for obvious defects (e.g. distortions, wear and tear, weathering, tears (webbing strap, netting), fraying, defective roof flashing etc). If there is any doubt whether the protection system can be operated safely, it should be checked by an expert, including written documentation.
 - The entire safety equipment must be inspected at least once a year by an expert. The expert's inspection is to be documented in the inspection record.
 - After strain caused by a fall, the entire protection system is to be withdrawn from further use and inspected by an expert.

3 Components, dimensions, material, application

Net components and dimensions:

- (a) 2 m x 2 m net (3 m x 3 m net)
- (b) Handles
- (c) Test mesh

Fall arrest equipment

- (d) Webbing strap 8.50 m (12,5 m)
- (e) Ratchet

Accessories

- (f) Transport bag

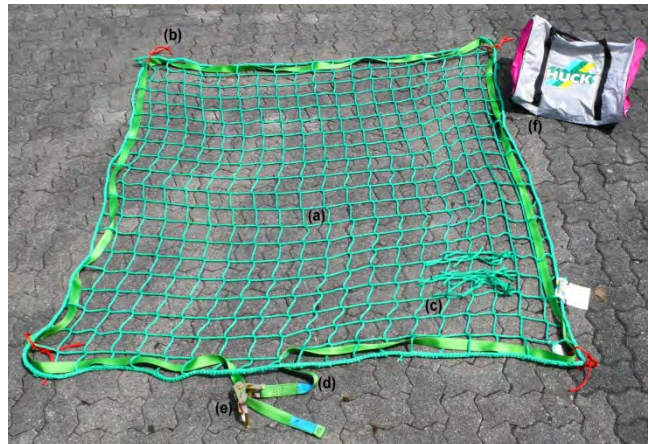
Material

Netting: high tenacity polypropylene

Ratchet: galvanised steel

Application

Fall protection and arrest equipment for one person



4 Storage and care

Storage: Keep the protection system in a suitable cover in order to protect it from UV rays, chemicals, damp, heat sources and other environmental impacts.

Care: As and when required, clean with lukewarm water and mild soap. Rinse in clean water and dry in the open.
Do not dry in a tumble dryer or with another heat source.

5 Subfloor

Fall protection: Correctly installed dome light frame with or without flashing



Fall arrest equipment: Correctly installed dome light frame with flashing

6 Standards



The Huck dome light protection system has been inspected and certified in compliance with EN 1263-1 and EN 795:2012 Typ B.

7 Symbols and markings

Fall protection in compliance with EN 1263-1 (net, positioning handles, test mesh)

Name	Protective net
Number of the corresponding standard	1263-1
Protective net system / net class	S / A2
Mesh classification, mesh size [mm]	Q100 M
Article / dimensions [m]	1904-100 / 2 x 2
Test mesh minimum breaking force (checked in compliance with EN 1263-1, para. 7.7)	40,9 J
Net manufacturer's name or logo	
Year of manufacture and manufacturer's serial number	20xx, xxxxxxxx
Symbol that attention is to be paid to the operating instructions	

Fall arrest equipment in compliance with EN 795:2012 Typ B (webbing strap and ratchet)

Classification	Huck dome light net
Number of people	1
Use only with fall absorber	yes
Number of the relevant standards	EN 795:2012 Typ B
DEKRA Testing and Certification GmbH	CE 0158
Net manufacturer/distributor's name or logo	
Year of manufacture and manufacturer's serial number	20xx, xxxxxxxx
Symbol that attention is to be paid to the operating instructions	

Production and sales

Manfred Huck GmbH, Asslarer Weg 13-15, D-35614 Asslar-Berghausen

Notified body involved in the prototype test

DEKRA Testing and Certification GmbH, Dinnendahlstraße 9, D-44809 Bochum, CE 0158

8 Inspection / lifespan

Before every use, the user should check:

- ropes and seams for damage (tears, cuts, fraying, abrasive wear or other damage)
- metal and plastic parts for damage
- that the ratchet and fasteners work
- the inspection sheet for confirmation.

Annual inspection:

There are three tabs attached to the net with cable ties. One of these tabs is to be sent to the manufacturer every year.

- Carefully undo the cable tie attaching the tab to the net. **Do not damage the net and the test mesh when doing this!**
- Send the tab plus the seal with the serial number on it to the manufacturer (Manfred Huck GmbH)

A visual and functional inspection must be carried out on the protection system at least once every twelve months by a suitable, knowledgeable person since the user's safety depends on the equipment's effectiveness and durability. Depending on how often it is used and the environment, intervals between inspections can be shorter.

The inspection is to be documented in the inspection sheet and inspection record and kept with the protection system.

If the dome light net no longer appears safe, it may no longer be used and must be replaced immediately.

Do not continue to use if:



- damage or wear and tear on components is apparent
- strain has been caused by a fall
- the maximum use period has expired
- the product label can no longer be read.

Safety nets have test meshes included by the manufacturer to be able the reduction in strength caused by ageing to be established. Its minimum breaking force is given on the label. The inspection must be undertaken in accordance with DIN EN 1263-1 section 7. The address of a material test establishment can be obtained from the net manufacturer or responsible trade association.

Repairs, additions or modifications to the protection system may only be carried out by the manufacturer.

9 Period of use

A maximum of 5 years from the year of manufacture if the directions for use are observed and it is inspected annually by an expert.

The protection system's period of use depends on how it is used and cannot be generally defined owing to different operating conditions, use, care and storage.

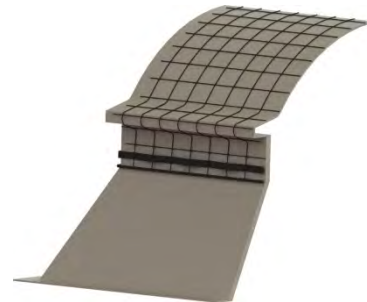
Protective nets may only be used without having the test meshes inspected within 12 months of manufacture or inspection. Thereafter the inspection is to prove that test mesh's minimum energy absorption capacity does not fall below the minimum value.

10 Instructions for use

As **FALL PROTECTION** in accordance with EN 1263-1



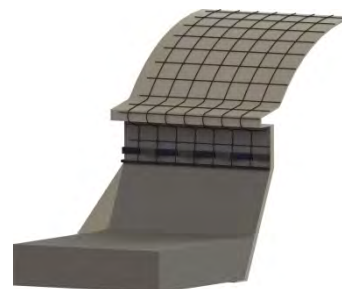
The use of fall protection is permitted even if the dome light frame has already been attached to the subfloor (supporting structure, wooden frame) in accordance with the standard, but is not yet integrated into the roof flashing (membrane, bitumen) in accordance with the standard.



As **FALL PROTECTION** in accordance with EN 1263-1
and **FALL ARREST EQUIPMENT** under EN 795:2012 Typ B



This may only be used when the dome light frame is attached to the subfloor and integrated into the roof insulation and roof flashing (membrane, bitumen) in accordance with the standard.



11 Installation

As **FALL PROTECTION** according to EN 1263-1
and **FALL ARREST EQUIPMENT** under EN 795:2012 Typ B



Under the Occupational Health & Safety Act, a person must be secured before nearing a dome light.

1) Place the net over the dome light

- Place the net at a safe distance of at least 2m from the dome light (fall opening)
- Lift the net using both straps
- Carefully move towards the dome light and throw the net over the dome light.

2) Tie down the net

- Place the webbing strap around the dome light and unravel
- Tighten the tension belt and carefully fasten
- After fastening the tension belt it must be ensured that the strap has gone round the tensioner pulley at least three times
- When tightening the fall arrest equipment, the strap must be pulled tight enough to be able to fit a flat hand between the dome light and the webbing strap
- After tightening the strap, the fall protection dome light net is ready for use
- After use, release the tension belt by operating the lever.

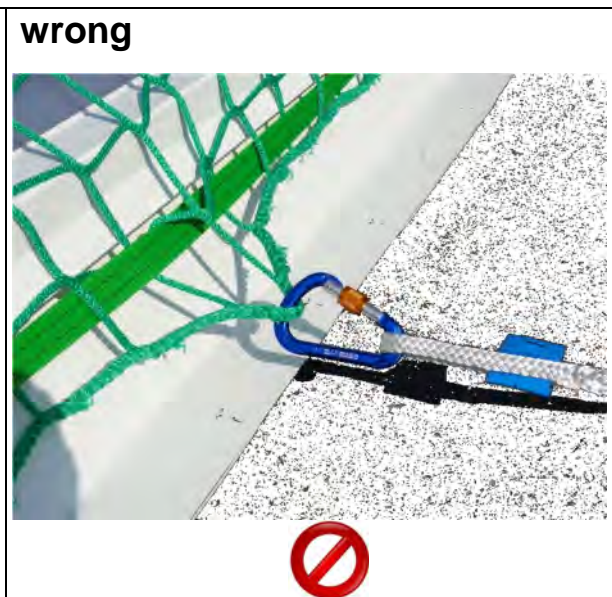
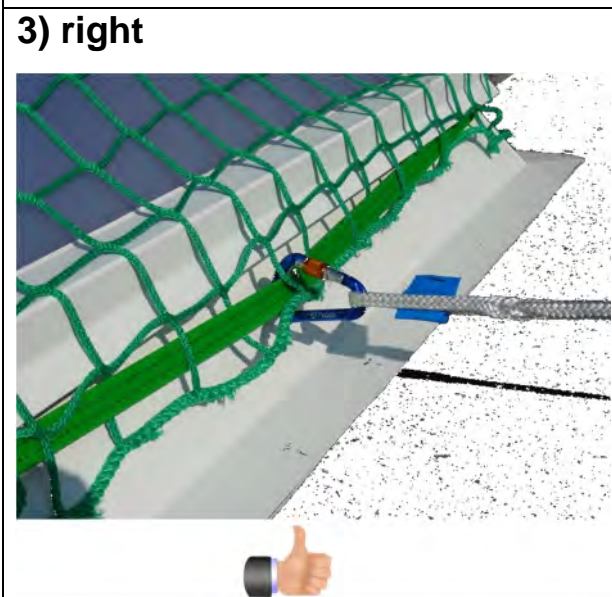
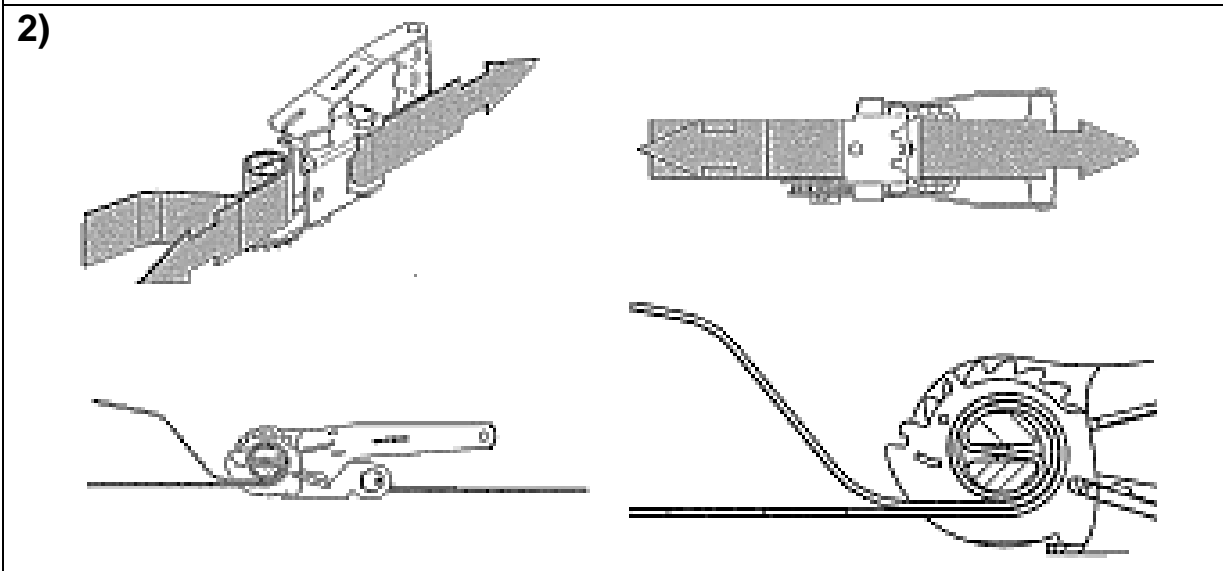
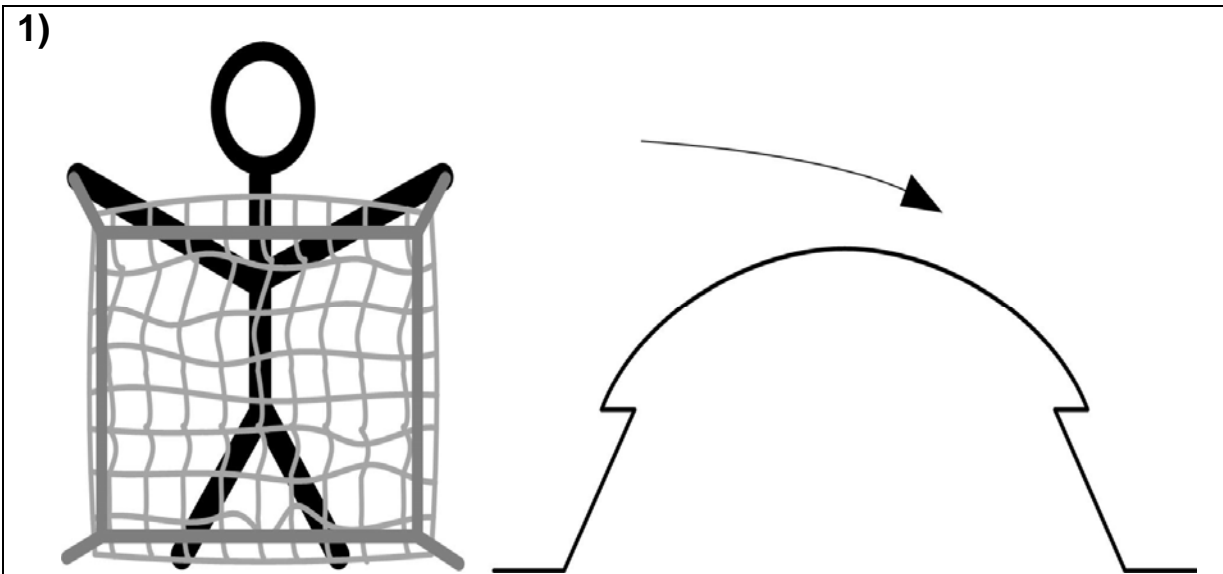
3) Hooking on the carabiner when using it as fall arrest equipment (EN 795:2012 Typ B)

- Hook the carabiner onto the webbing strap and the thick edge of the net.
- Only use as fall arrest equipment when the dome light is attached and sealed in accordance with the standard.

Fasteners (e.g. carabiner clips) on the personal protective equipment (PPE) may only be hooked onto the tension belt if it has been properly fastened.



Before use as fall arrest equipment, ensure once again that the tension belt has been assembled and firmly attached in accordance with the installation and operating instructions.





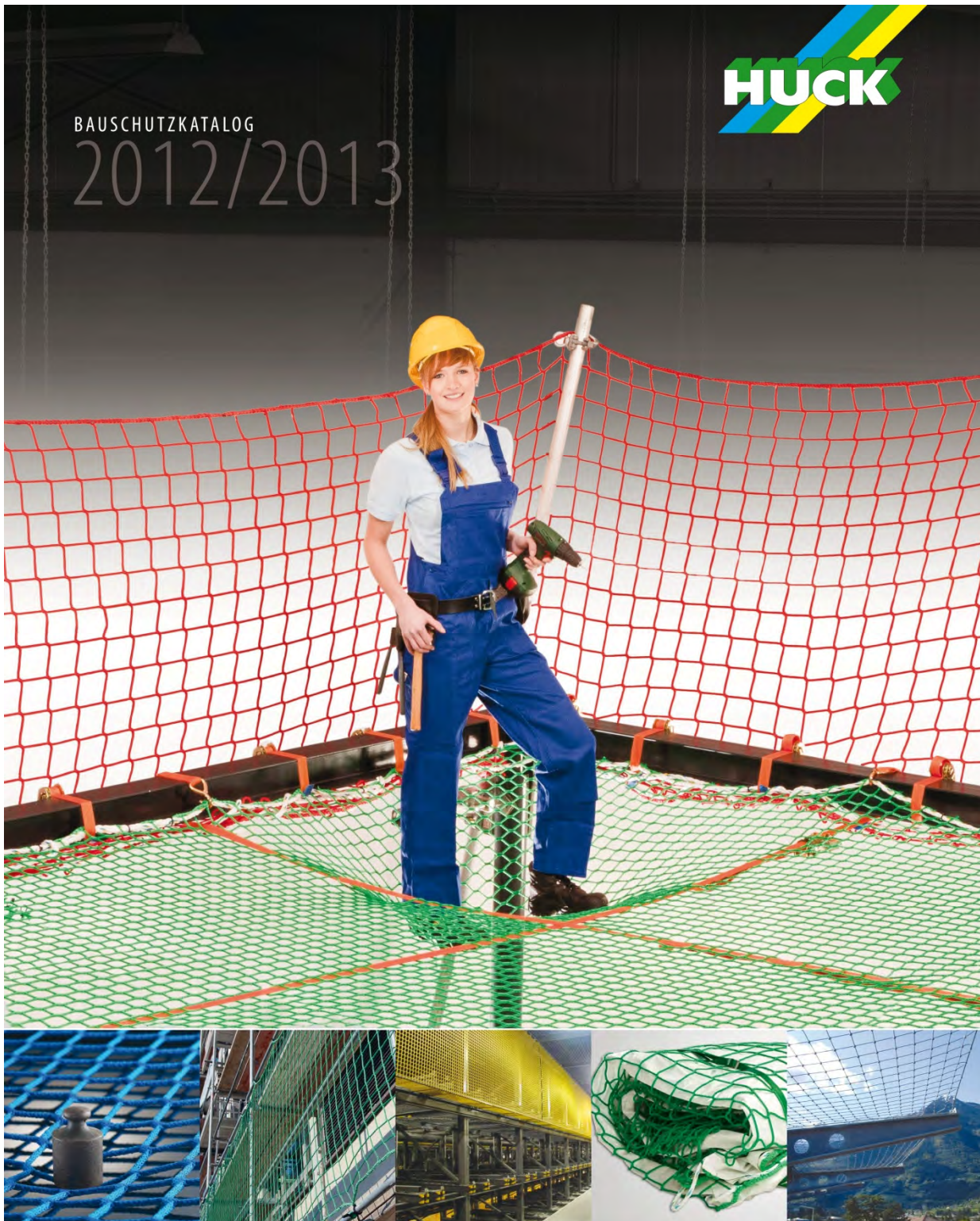
12 Inspection sheet-- Dome light net

Product:	Dome light- protective net		
Size:			
Manufacturer:	Manfred Huck GmbH		
Year of manufacture:		Serial number:	
Date of first use:			
Owner / company:			
Date	Comments, inspection result	Inspector's signature	



13 Inspection record -- master

Product:	Dome light– Protective net
Net serial number:	
Webbing strap serial number:	
Annual system inspection carried out on:	
Next inspection by:	
Items to check	Defects identified / action
Documentation:	
Installation and operating instructions	
Visible dome light net parts	
Damage discernible	
Dirt	
Fraying on the webbing strap or netting	
Test mesh has been inspected and continued use confirmed	
Test mesh forwarded for inspection (annual)	
Ratchet function	
Additional comments:	
Test result, inspection report:	
Attention: please complete the inspection sheet as well	
The safety equipment conforms to the manufacturer's installation and operating instructions and the best available technology. Safety-related reliability is confirmed.	
Comments:	
Expert familiar with the safety system	
Name: _____ Signature: : _____	



BAUSCHUTZKATALOG
2012/2013



Construction Safety nets
You can rely on HUCK safety nets!



Brick guard rail nets



Safety nets with overlay panels



Personal safety nets

Manfred Huck GmbH Netz- und Seilfabrik

Asslarer Weg 13-15
D-35614 Asslar-Berghausen
Germany

Telephone: +49 (0) 6443 63-0

Telefax: +49 (0) 6443 63-29

E-Mail: sales.de@huck.net

Web: www.huck.net

For more great HUCK products:

